



ELEVATING YOUR BATHROOM





HANSA specialises in the production of high-quality and innovative sanitary fittings for both private and public use. We have over a hundred years' heritage of providing safe, convenient and sustainable access to water, for everyone.

OUR PROMISE: WATER SMART LIVING

We create Water Smart touchpoints and spaces.

Water Smart covers all the aspects of life, wherever and whenever water is being used: from private to public spaces. Offices, factories, businesses; schools, hospitals and facilities; homes and any venues can be and become Water Smart.

We offer Water Smart products and services

Water Smart means the safe, hygienic, comfortable and energy efficient use of water. We embrace the use of data to best understand how to consume water in a sustainable way, in real time. Our products are easy to install and attainable for everyone. We have the expertise and knowledge of creating the smartest ways to use and enjoy water.

We enable Water Smart Living

Water Smart Living crystallizes our brand vision: We make water experiences smart, convenient, safe and sustainable for the benefit of people, businesses, society and the environment.
Enabling Water Smart Living.

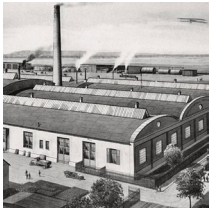
OUR HISTORY



1911

FOUNDED BY KARL GÖHRING

Karl Göhring founds the company as the Preß- und Stanzwerke GmbH. The first location is Zuffenhausen near Stuttgart.



1913

HANSA METALLWERKE AG

In 1913, the company moves into the new factory building in the Möhringen district of Stuttgart. This location has remained the company's headquarters to this day. In 1921, it was renamed as the HANSA Metallwerke AG.



1950

FIRST PATENT

Award of the first patent for our hand shower with regulating and mixing valve. Also, this provided the inspiration for HANSA's logo: the crown handle of our two-handle mixer.



1962

EUROPE'S FIRST SINGLE-LEVER MIXER

HANSA produces Europe's first single-lever mixer – entirely on the basis of its own design.



1971-73

A MINOR SENSATION

Introduction of the HANSAMAT thermostat and HANSATASTAMAT pushbutton fitting. HANSA is the first manufacturer to introduce range in compliance with the 1/DIN 4109 noise protection class.



1976

TOUCHLESS OPERATION PREMIÈRE

Start of production and sale of touchless fittings for washbasins, showers and urinals using infrared technology.



1979

THE BIRTH OF A CLASSIC

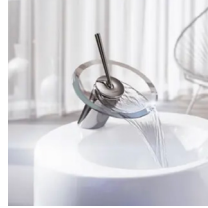
The first HANSAMIX single-lever mixer is manufactured and the entire range is introduced.



1984

MAJORITY INTEREST

The company acquires a majority holding in the renowned Swiss fittings manufacturer Karrer, Weber and Cie., KWC, based in Unterkulm, Switzerland.



2003

A DESIGN MILESTONE

HANSAMURANO revolutionizes the fittings market and electrifies the design world: a single-lever mixer with an open flow of water that matches chrome and glass in a new and elegant way.



2007

A STRIKING TRAILBLAZER

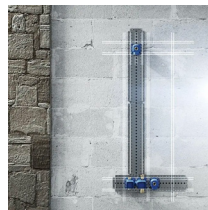
The joystick operation of the HANSASTELA fitting not only provides for a new and contrast-rich design language, but also points out where the future lies for the entire sector.



2010

SHOWROOM OPENING

The HANSA Aquapunkt opens its doors at the headquarters location and brings the brand closer to visitors with information ranging from the story of the company to the individual product series.



2011

NO-LIMITS DESIGN FLEXIBILITY

The new HANSAMATRIX modular concealed system opens the door to almost unlimited creativity and flexibility on the way towards the dream bathroom.



2013

A MEMBER OF ORAS GROUP

The Oras Group, a Finnish concern with a strong tradition, takes over HANSA: Since then, the two brands have been a powerful, globally active team.



2016

COMPLETE SYSTEM FOR CONCEALED INSTALLATIONS

The HANSABUEBOX enters the market, bringing unheard-of utility with respect to the speed and quality of installation.



2018

A TRUE WORLD'S FIRST

The HANSAEMOTION Wellfit shower system features three beneficial regeneration programmes at the touch of a button to give body and spirit a boost.

WATER SMART LIVING



Sustainable use of water can help us achieve positive long-term changes. But how will we get there? By making more conscious decisions about our consumption habits – using intelligent solutions that can help us access water in a smarter, safer and more convenient manner.

At HANSA, we've spent over a century working towards this goal. Crafting, engineering and designing faucets and showers that aim to make us all more aware of water. For a smarter way of living.

So, when we say yes to Water Smart Living, we say yes to a future that keeps us healthier and safer while allowing us to reduce our water and energy usage. Whether we're at home or in a hospital, a school or any public space. Because we say yes to a way of living where smarter faucets can lead us to make more conscious choices. Not only for the sake of convenience, but for the sake of our environment, safety and health.

Say yes to Water Smart Living

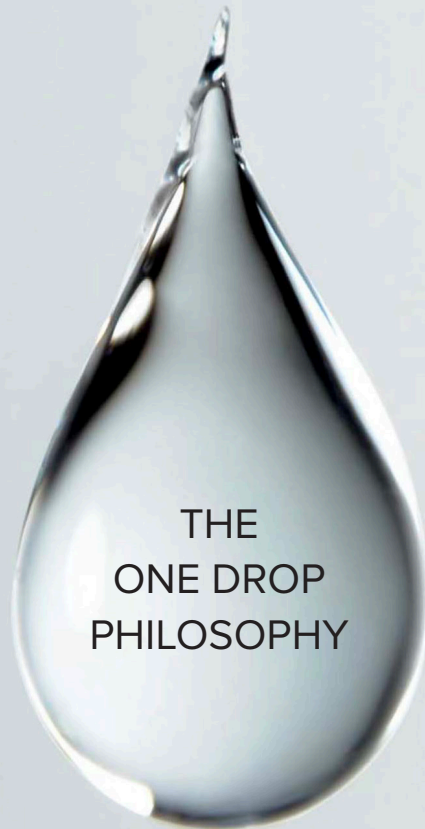
At Oras Group we believe that every drop counts. Every faucet.
Every shower. Every action. Because when you add all those drops
of action together – home after home, company after company,
country after country – you suddenly get a big sea of sustainable change.

That's why we are on a mission to make it easy and comfortable
for our customers to save water and thereby energy.

We call it our One Drop Philosophy.

And it runs through everything we do.

Because just like every drop that our customers save counts,
every drop we save as a company counts. And we work to become more
sustainable in all parts of our business – from innovation,
design and manufacturing to distribution and
how we run our own offices.



SUSTAINABLE DOWN TO THE SMALLEST DETAIL

Oras Group's sustainability is based on the company's strategy, mission, commitments and the owner's vision of sustainable value creation.

In line with the 17 UN Sustainable Development Goals our sustainability program includes three streams with specific targets: sustainable supply chain, sustainable products and services and responsible workplace.*

CLIMATE ACTION

We ensure responsible and transparent processes in our operations and require the same from our suppliers. We develop products and services that reduce water and energy consumption.



RESPONSIBLE CONSUMPTION AND PRODUCTION

We reduce our own CO2 emissions step by step. We develop smart and sustainable ways to use water with our products.



CLEAN WATER AND SANITATION

We provide products and services that are safe, enable hygienic water usage, good drinking water quality and reduce water consumption.



DECENT WORK AND ERGONOMIC GROWTH

We promote a safe working environment with the help of automation and technological innovation, creating sustainable growth.

We ensure continuous learning, labor rights and equal treatment of all employees.



*You can find more information and downloads at Orasgroup.com/sustainability



POLO

CONVENIENTLY PRACTICAL

HANSAPOLO is a range of user-friendly, longlasting and versatile faucets that encapsulates our decades of experience. A range of faucets that offer the perfect balance between contemporary and modern design and reliable, smart technology. In all, high quality, sustainable and great value for money –and one of our alltime favourite ranges.

POLO BASIN MIXER

35MM CARTRIDGE
MAINS PRESSURE:
WELS 5 STAR 6 L/MIN
CHROME:
514222930037



POLO KITCHEN MIXER

35MM CARTRIDGE
SWIVEL SPOUT
MAINS PRESSURE:
WELS 4 STAR 7.5 L/MIN
CHROME:
514822930037



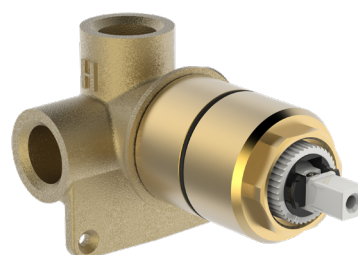
POLO SHOWER MIXER TRIMSET

35MM CARTRIDGE
MAINS PRESSURE
CHROME:
50629093



ALSO REQUIRES VARIO BUILT IN PART/VALVE FOR SHOWER MIXER

35MM CARTRIDGE
MAINS PRESSURE
CODE:
50500100





Polo Basin Mixer
Finish: Chrome



Polo Kitchen Mixer
Finish: Chrome

MIX

REFINED STYLE

HANSAMIX is one of the most successful and popular HANSA fittings ever. Since it was launched into the market in 1978, it has embodied the key HANSA values of sophisticated technology and superlative quality down to the finest detail. The HANSAMIX concept guarantees optimum drinking water hygiene, high levels of convenience and maximum safety.

MIX KITCHEN MIXER

48MM CARTRIDGE
SWIVEL SPOUT
MAINS PRESSURE:
WELS NOT STAR RATED 12L/MIN
CHROME:
01142283



TEMPRA

PERFECTLY FIT

HANSATEMPRA is designed to elevate safety and comfort in sensitive environments.

A hospital is one place where microscopically small things can often lead to major consequences. To minimise the spread of microbes through contact – as one example – HANSATEMPRA's long lever can be operated with ease simply by using the forearms. In addition, an integrated hot water stop prevents scalding, and the faucet can be thermally disinfected as a way of eliminating harmful microbes.

TEMPRA WALL MOUNTED 2 TAP HOLE THERMOSTATIC MIXER & SPOUT

SWIVEL SPOUT
CENTRE LOCK
245MM PROJECTION
MAINS PRESSURE:
WELS NOT STAR RATED 12L/MIN
CHROME:
8382202



VIVA

SIMPLY BETTER SHOWERING

When reliable performance and safety take centre stage, our ergonomic and easy-to-use HANSAVIVA showers are designed to bring up what matters most into any bathroom: Ensuring safe, comfortable, and sustainable shower experiences for the whole family - every day. It is about finding the way to simply better showering. With some ease of mind, the privilege of taking care and deserved indulgence in the circle of life.

HANSA

VIVA SLIDE SHOWER

C/W 3 FUNCTION HAND PIECE

RAIL LENGTH: 971MM

INCLUDES SOAP DISH

MAINS PRESSURE:

WELS NOT STAR RATED 12L/MIN

CHROME:

44150330

ELEMENTI

UNIVERSAL WALL ELBOW FEMALE

FEMALE

CHROME:

40305.02



HANSA

VIVA 3 FUNCTION HAND PIECE

MAINS PRESSURE:

WELS NOT STAR RATED 12L/MIN

CHROME:

44330300



2 Year Guarantee*
Twist Guard Hose

Mains Pressure
Designed & Engineered in Germany

Multi Function
Easy Clean Anti Limescale Technology

BASIC JET

FOR THE BEST START TO THE DAY

The HANSABASIC JET offers a glamorous design to enhance your showering needs. Including a 3-spray hand shower can be combined with any modern fittings.

HANSA

BASIC JET SLIDE SHOWER

C/W 3 FUNCTION HAND PIECE

RAIL LENGTH: 764MM

INCLUDES SOAP DISH

MAINS PRESSURE:

WELS NOT STAR RATED 16L/MIN

CHROME:

44780133

ELEMENTI

UNIVERSAL WALL ELBOW FEMALE

FEMALE

CHROME:

40305.02



HANSA

BASIC JET 1 FUNCTION HAND PIECE

MAINS PRESSURE:

WELS NOT STAR

RATED 16L/MIN

CHROME:

44610300



HANSA

BASIC JET 3 FUNCTION HAND PIECE

MAINS PRESSURE:

WELS NOT STAR

RATED 16L/MIN

CHROME:

44630300



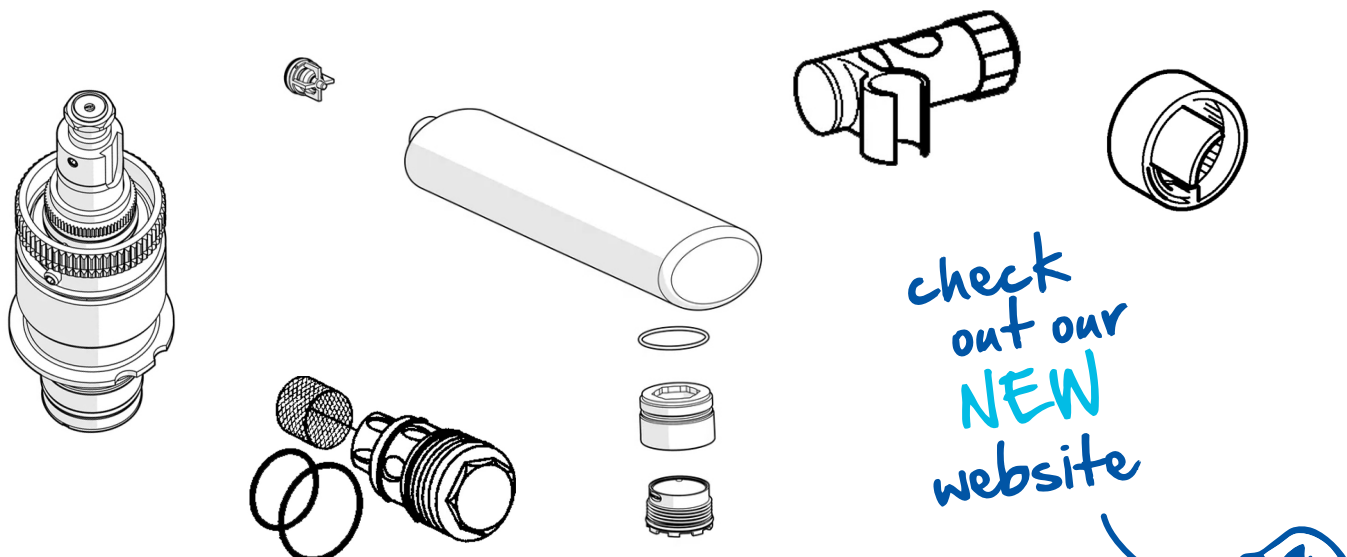
*All guarantees are subject to terms and conditions and available at:
robertson.co.nz/warranties

SPARE PARTS

IT'S WHAT WE DO!

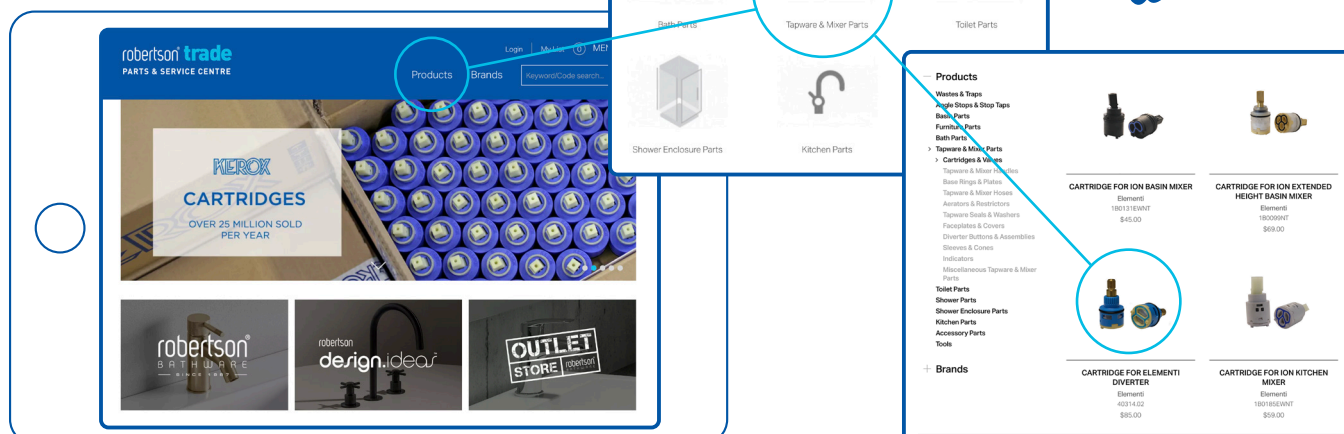
Our plumbing and bathware after sales service centre is anchored by a dedicated team, comprising of two proficient technicians, whose expertise ensures swift and effective resolutions to any issues our customers encounter.

Commitment to excellence and problem solving underpins our reputation for dependable aftercare. With over 2000 spare parts stocked in our Auckland warehouse, we're poised to address any maintenance requirements promptly, minimising downtime and maximising customer satisfaction. Moreover, our expansive distribution network spans across New Zealand and the South Pacific, enabling us to extend our support and services to customers far and wide. Whether it's a remote island or a bustling city, our reach ensures that assistance is always within arm's reach. Complemented by a guaranteed 24-hour response time for all enquiries, our technical team stands ready to provide unparalleled support, reaffirming our commitment to delivering exceptional service at every turn.



Our extensive range of spare parts, genuine branded products, technical information and trouble shooting advice, is now just a click or swipe away!

ROBERTSONTRADE.CO.NZ







25 Vestey Drive
Mt Wellington, Auckland 1060

PO Box 14695, Panmure
Auckland 1741, New Zealand

Ph: +64 9 573 0490
Fax: +64 9 573 0495
Email: sales@robertson.co.nz

ROBERTSON.CO.NZ



SHOWROOMS

A

AUCKLAND

ROBERTSON

25 Vestey Drive, Mt Wellington
Ph: (09) 573 0490

Open Monday to Friday 8am - 5pm
Open Saturday 9am - 2pm
Closed Sunday and public holidays

KITCHEN THINGS | LUXURY COLLECTION

26 Morrow Street, Newmarket
Ph: (09) 522 8375

Open 7 days 10am - 6pm

C

CHRISTCHURCH

HOME IDEAS

37 Mandeville Street Riccarton
Ph: (03) 348 2863

Open Monday to Friday 9am - 4pm
Saturday 10am - 2pm Sunday 10am - 2pm

You can view and purchase our products nationwide from our supporting bathroom suppliers. To find your nearest location visit **ROBERTSON.CO.NZ** and click on the 'where to buy' link at the top of the page. Alternatively you can view products at our Robertson Bathware Showrooms at the locations below.

robertson
design.ideas™

ROBERTSON DESIGN IDEAS

Email: designideas@robertson.co.nz

ROBERTSONDESIGNIDEAS.CO.NZ



robertson®
trade

ROBERTSON TRADE PARTS & SERVICE CENTRE

42 Vestey Drive
Mt Wellington, Auckland 1060
Email: trade@robertson.co.nz

ROBERTSONTRADE.CO.NZ



ROBERTSON OUTLET STORE

42 Vestey Drive
Mt Wellington, Auckland 1060
Email: outlet@robertson.co.nz
By appointment only

www.trademe.co.nz/stores/robertson-bathware-outlet-store